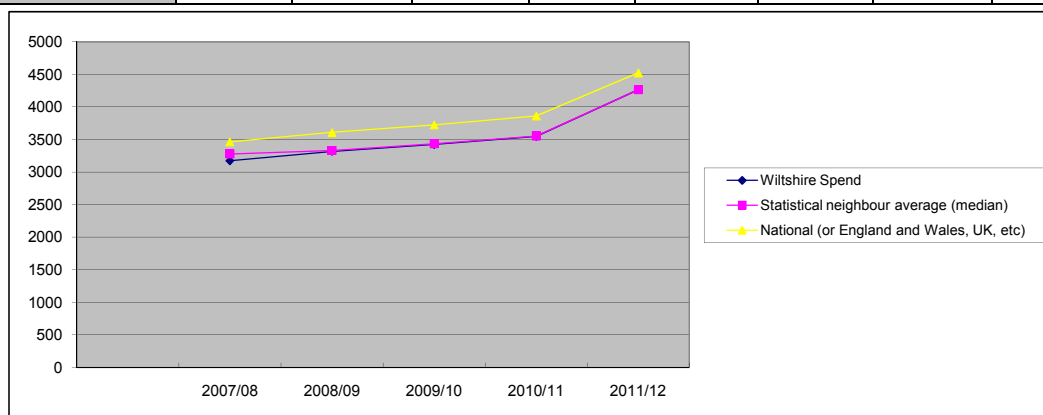


Wiltshire Section 251 Benchmarking 2011-12 - NET Expenditure

Section 251 Line	Individual Schools Budget
Definition	<i>Line 1.0.1 Individual Schools Budget per pupil</i>

Table of data								
Financial year	2007/08	2008/09	2009/10	2010/11	2011/12			
Wiltshire Spend	3176	3320	3426	3549	4268			
Statistical neighbour average (median)	3278	3334	3435	3555	4268			
National (or England and Wales, UK, etc)	3465	3610	3726	3864	4526			



Describe the data to pick out features of performance and trends compared to other Local Authorities and National performance

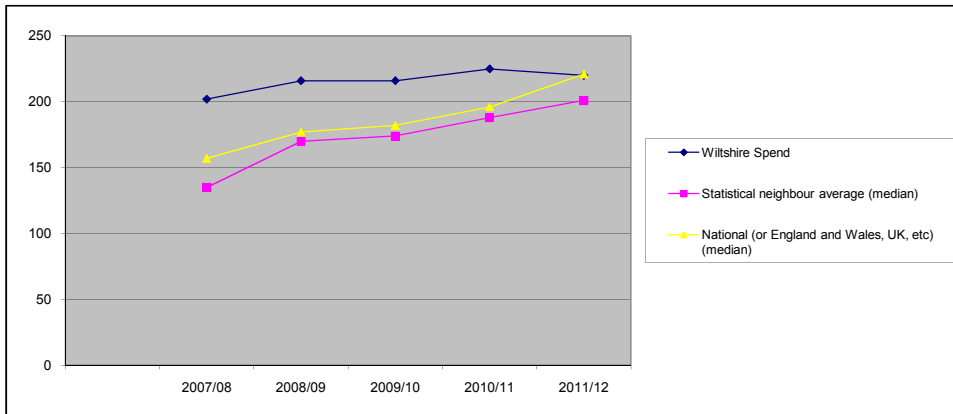
2010/11	<p>Funding Delegated to schools in Wiltshire is lower than the national average. This would be expected as funding received by the county is lower than more urban authorities, for example and lower than its statistical neighbours. Comparison with statistical neighbours shows Wiltshire is now in line with the average for similar authorities in terms of the amount delegated to schools. increased delegation of SEN funding to Primary Schools will have contributed to this, the position may also be affected by the way in which mainstreamed grants were delegated (although this should be reflected in all authorities and accounts for the overall increase in total in each case) and the fact that Wiltshire did not apply an negative inflation adjustment to schools budgets in 2011/12 when a number of other LAs did.</p>
----------------	---

Data Source:	
Section 52/251 Benchmarking - line 1.0.1. includes school budget share comprising DSG and LSC allocations	
Date of completion	22/11/2011
Completed by	Liz Williams

Wiltshire Section 251 Benchmarking 2011-12 - NET Expenditure

Section 251 Line	Lines 1.2.1 to 1.2.8 - Schools Budget SEN
Definition	Schools Budget SEN (not including PRUs, behaviour support, education out of school) £ / pupil (sum of lines 1.2.1 to 1.2.8)

Table of data							
Financial year	2007/08	2008/09	2009/10	2010/11	2011/12		
Wiltshire Spend	202	216	216	225	220		
Statistical neighbour average (median)	135	170	174	188	201		
National (or England and Wales, UK, etc) (median)	157	177	182	196	221		



Describe the data to pick out features of performance and trends compared to other Local Authorities and National performance

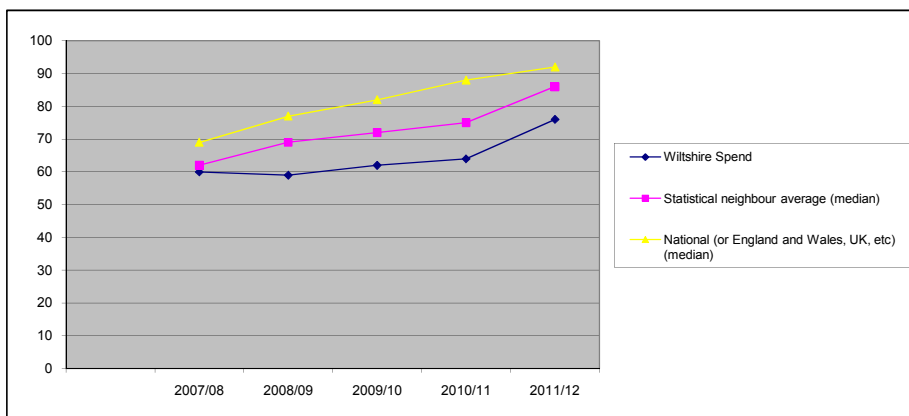
2010/11	Expenditure on SEN retained centrally within DSG is now in line with the national average. In previous years Wiltshire has benchmarked as retaining more funding centrally than the average for statistical neighbours and than the national average. The reduction in expenditure on external placements and the increased delegation of SEN funding to mainstream primary schools, in addition to investment in Wiltshire's special schools have brought Wiltshire in to line with other authorities.
----------------	---

Date of completion	22/11/2011
Completed by	Liz Williams

Wiltshire Section 251 Benchmarking 2011-12 - NET Expenditure

Section 251 Line	Lines 1.3.1 to 1.3.3 Behaviour Support
Definition	PRUs/ Behaviour Support/ Education Otherwise £ / pupil (Sum of 1.3.1 to 1.3.3)

Table of data							
Financial year	2007/08	2008/09	2009/10	2010/11	2011/12		
Wiltshire Spend	60	59	62	64	76		
Statistical neighbour average (median)	62	69	72	75	86		
National (or England and Wales, UK, etc) (median)	69	77	82	88	92		



Describe the data to pick out features of performance and trends compared to other Local Authorities and National performance

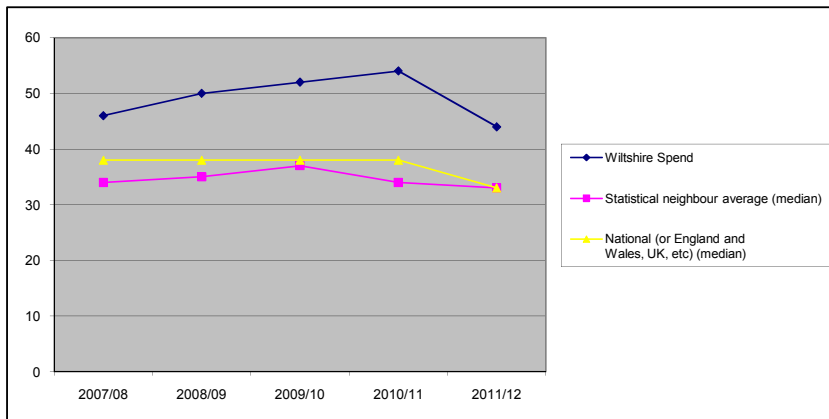
2010/11	Wiltshire spend is lower than statistical neighbours as in previous years.
----------------	--

Date of completion	22/11/2011
Completed by	Liz Williams

Wiltshire Section 251 Benchmarking 2011-12 - NET Expenditure

Section 251 Line	Line 2.0.6 SEN - non Schools Budget
Definition	<i>SEN Expenditure by the LA - includes Psychology Service, SEN Administration, Assessment and Co-ordination, Therapies (Speech & Language), Parent Partnership, Monitoring of SEN Provison</i>

Table of data								
Financial year	2007/08	2008/09	2009/10	2010/11	2011/12			
Wiltshire Spend	46	50	52	54	44			
Statistical neighbour	34	35	37	34	33			
National (or England and	38	38	38	38	33			



Describe the data to pick out features of performance and trends compared to other Local Authorities and National performance

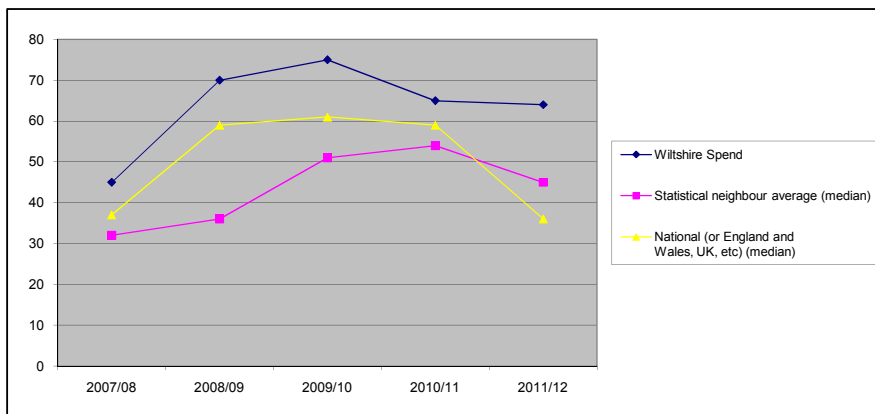
2010/11	Wiltshire spends above the national average and the average for statistical neighbours on SEN however spend in 2011/12 has reduced and is closer to the average. Savings have been made through the Management review and restructure of DCE and not in front line services.
----------------	--

Date of completion	22/11/2011
Completed by	Liz Williams

Wiltshire Section 251 Benchmarking 2011-12 - NET Expenditure

Section 251 Line	Line 2.1.9 School Improvement
Definition	School Improvement Services

Table of data								
Financial year	2007/08	2008/09	2009/10	2010/11	2011/12			
Wiltshire Spend	45	70	75	65	64			
Statistical neighbour average (median)	32	36	51	54	45			
National (or England and Wales, UK, etc) (median)	37	59	61	59	36			



Describe the data to pick out features of performance and trends compared to other Local Authorities and National performance

2010/11	<p>Pattern of spend shows a wide gap between spend in Wiltshire compared with statistical neighbours - gap narrowing in 2010/11. Spend in 2010/11 was more reflective of the national pattern but higher.</p> <p>The benchmarking data shows all authorities to have made reductions in their School Improvement expenditure, the reduction in Wiltshire is not as marked. this may reflect differing approaches in authorities towards reductions in LA spend following Government reductions and differing approaches to the new Academy regime.</p>
----------------	--

Date of completion	22/11/2011
Completed by	Liz Williams